



UD TRUCKS

QUON

with new features

Innovation that puts people
and their safety first.



Going the Extra Mile

QUON WITH NEW FEATURES

GREATER SAFETY
FURTHER RANGE
BETTER FUEL EFFICIENCY
SMARTER DRIVABILITY

Our newest generation of trucks take to the road, loaded with innovative safety features and a comprehensive set of powerful design enhancements. It's a generation designed for the long-term safety of drivers, communities, and road users. Through enhanced fuel efficiency, greater road safety systems, longer uptime, and superior driver comfort, the latest Quon with new features puts people, and their safety — first.



Quon

with new features

Enhanced for safety, made for people

Safety on the road is paramount. The Quon with new features has been upgraded in several key areas to promote safer driving, improve fuel efficiency, raise uptime, lower operational costs, and be more environmentally sustainable.

NEWLY IMPROVED

SMART SAFETY P18

Safer and more dependable

The Quon with new features is more effective at mitigating safety risks on the road through cutting-edge technology: Traffic Eye Brake System, Lane Departure Warning, disc brakes and the new Traffic Eye Cruise Control with Stop and Driver Initiate Go feature among many others. These features contribute to achieving Vision Zero — a future of no injuries and fatalities arising from road collisions.

SMART DRIVABILITY P10

Easier to use, smoother to drive

The cabin has been completely redesigned to provide greater driver comfort. ESCOT-VI automated manual and Allison 6 speed automatic transmission are the next evolution in unparalleled operability.

More robust disc brakes, standard on all models, provide a quick and smooth response, as well as excellent braking power. These innovations contribute to driver comfort while reducing the risk of danger to the surrounding environment.

NEWLY IMPROVED

SMART FUEL EFFICIENCY AND ENVIRONMENTAL CARE P12

Cleaner and more powerful

Refinements to the driveline have achieved a high level of fuel efficiency that contributes savings directly to the bottom line. The Quon with new features exceeds Japan's current fuel economy standards for heavy-duty vehicles by 10%* and complies with upcoming Japanese fuel economy standards. Through greener truck technology, UD Trucks' aims to become a Japanese Sustainability leader by 2025.

*Applicable to Quon with GH11 engine and ESCOT.



SMART PRODUCTIVITY P22

Better productivity, better efficiency

We've reduced the weight of some models, improving load handling and suspension. As a result of this lower tare weight, carrying capacities have increased, allowing for better productivity.

NEWLY IMPROVED

SMART UPTIME P24

Longer service intervals for greater peace of mind and lasting safety

The Quon offers comprehensive after sales services, such as 'UD Genuine Service', 'UD Genuine Parts', 'UD-TRUST: Service agreements', and 'UD Information Service including telematics'. This, in combination with further engine enhancements, have resulted in an unprecedented level of uptime — safely extending roadworthiness while reducing the cost of ownership. In addition to fewer breakdowns, users can enjoy the comfort of predictable costs and the peace of mind that your Quon is receiving the best parts and service available.

Advanced exterior that delivers superior safety, efficiency, and function

Our design goal was to develop trucks that drivers would be proud to drive — by combining a functional yet sophisticated look with advanced safety features.



Quon's aerodynamic shape allows for greater fuel efficiency, while its low cabin design with two-step entry/exit enables easy and safe access. For safer driving, Quon features power-saving, long-lasting LED headlamps (low beam) that improve night-time visibility for the driver.

Superior Aerodynamic Performance

Airflow is directed smoothly from the flat front face to the corners of the truck. The new shape of the optional wind deflector also improves fuel efficiency.





Comfortable interior based on design that 'puts people first'

We have re-examined the fundamentals of operability and visibility based on ergonomics. The result is a newly improved dashboard area, steering wheel, gear lever, and accelerator pedal. Providing excellent visibility, the intuitively designed instrument panel presents driving information that's smartly ordered to warning priority. The black and silver cabin has a modern feel, with careful attention to details that improve the driver's comfort. These new designs create a comfortable environment where the driver can concentrate on driving.

Safer and more dependable for all

The Quon with new features is geared towards improving and driving long-term commercial vehicle safety. This is achieved by detecting potential road dangers and warning the driver with an enhanced suite of safety systems, including: the Traffic Eye Brake System (standard), Blind Spot Information System (BSIS), Lane Change Support (LCS), and the Driver Alert System (optional).

Our goal is to achieve 'safety that puts people first' by providing safe driving conditions for drivers, while maintaining safety in the surrounding environment.

Active safety: Improved driver safety

Improved Traffic Eye Brake System

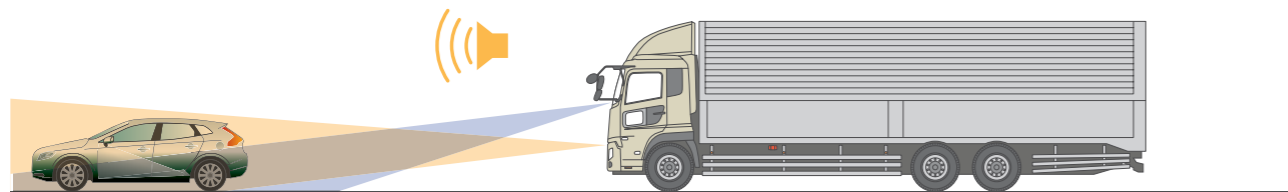
This system uses millimetre-wave radar and a camera to monitor the area in front of the truck. If it detects a potential collision it sounds an alarm, displays a warning lamp and a warning message. If the truck continues to close on the vehicle ahead, the system applies the brakes automatically to slow the truck and prevent the collision.

With the new improvements, the system can now detect vulnerable road users (VRU) such as pedestrians and cyclists. Any VRU that suddenly moves in front of the truck will be sensed by an active Moving Off Information Signal (MOIS). Active prediction and prevention of dangerous collisions reduce possible liabilities from accident claims, and make transportation safer for everyone on the road.

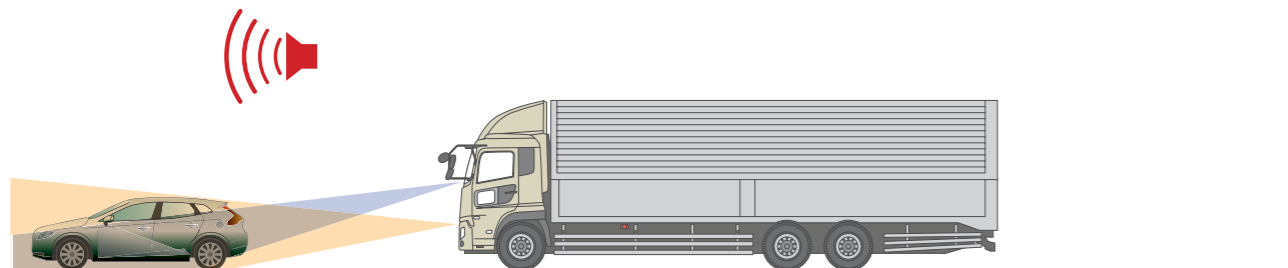
Traffic Eye Brake System Operation Figure



1. Uses both millimetre-wave radar and camera to monitor conditions in front of the truck.



2. While driving, if the system detects a chance of collision with the vehicle or VRU ahead, it sounds an alarm and displays a warning indicator to alert the driver.



3. If the vehicle or VRU gets close enough for a collision to be possible, the system quickly applies the brakes to reduce the potential damage from a collision.

NOTE: The Traffic Eye Brake System provides assistance for safe driving, but does not guarantee that all collisions will be avoided. It might not be possible to use this system on some roads and in some weather conditions. Please take care to drive safely without total reliance on this system.

Passive safety: Suppressing damage to a minimum

- Highly rigid cabin
- Side door beams
- FUPS*
- SRS airbags
- Seat belts with pre-tensioners
- Steering wheel & column with impact absorption function
- ECE-R29 cab strength compliant**

*Front Underrun Protection System
**ECE-R29 cab rating not available on CG models

Highly rigid cabin

Active safety: Predicting risk for driver safety

- Traffic Eye Brake System with MOIS and VRU detection
- Traffic Eye Cruise Control Stop and Driver Initiate Go*
- LDWS (Lane Departure Warning System)
- UDSC (UD Stability Control)
- Driver Alert System (optional)

*Available on 11L and 8L models at a later date.

Traffic Eye Brake System

Basic safety: Contributing to reducing fatigue while driving, supporting safe driving

- LED Headlamps
- Disc brakes
- Emergency Braking System
- UD Extra Engine Braking (UD EEB)
- UDSC (UD Stability Control)
- Safe Brake Blending
- Immobiliser
- Easy two-step entry/exit & long grip (driver's side)
- Blind Spot Information System
- Lane Change Support

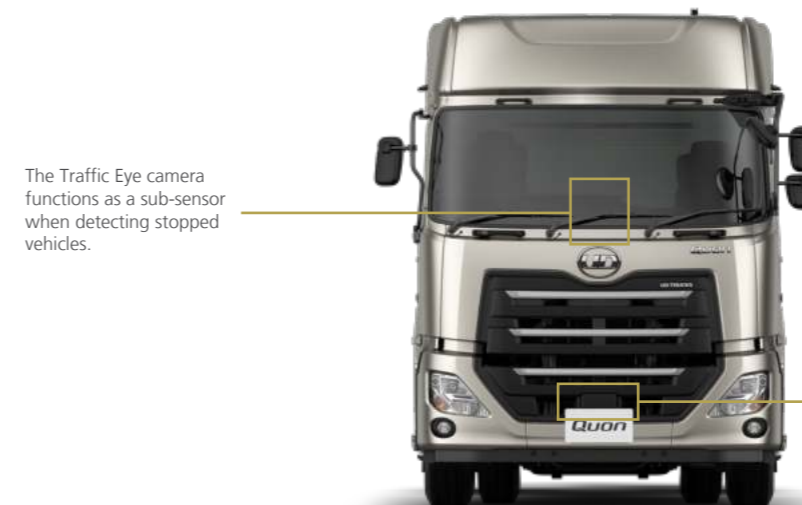
UDSC

Passive safety

Active safety

Basic Safety

Traffic Eye Brake System Components



The Traffic Eye camera functions as a sub-sensor when detecting stopped vehicles.

The Millimetre-wave radar functions as the main sensor when detecting the vehicle ahead.

Active safety: Predicting risk for driver safety

NEWLY IMPROVED

Traffic Eye Cruise Control with Stop and Driver Initiate Go*

This feature automatically adjusts the speed for the driver, slowing itself to a halt if the vehicle ahead stops. This reduces driver fatigue and stress, especially during congested roads or heavy highway traffic with variable speeds. To resume Traffic Eye Cruise Control, the driver simply presses the "Resume" button on the steering wheel or step gently on the accelerator pedal.

This safety system reduces potential accidents during deceleration, and is especially effective when ACC Stop and Driver Initiative Go are paired with Quon's Traffic Eye Braking System.

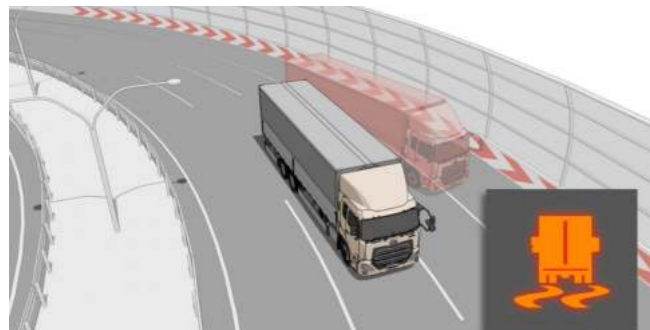
*This feature is available on 8L and 11L models at a later date.



Lane departure warning system*

The in-cab camera detects the traffic lanes to the left and right. If the driver unintentionally leaves the lane while driving at 60km/h or faster, the system sounds an alarm and flashes an indicator.

*This function is not triggered if the brakes and turn indicators are used.



Drifting (snowy and muddy roads, etc.)

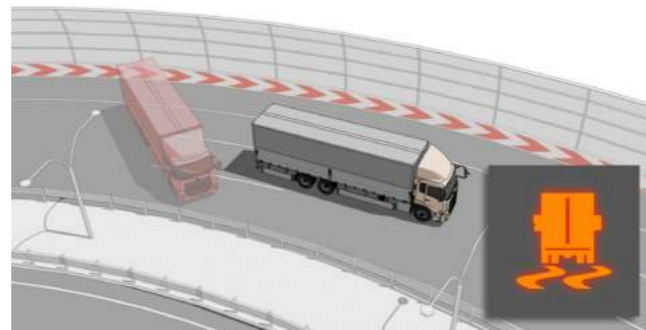
UD Stability Control (UDSC)

If the UDSC sensor detects conditions in which the truck could become unstable, such as curves or slippery road surfaces, the system applies suitable control to engine output, brakes, and braking power to each tyre to keep the truck stable. UDSC is standard on all models.

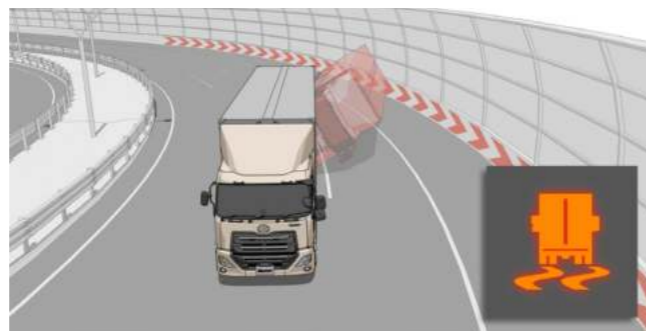


Driver Alert System (optional)

The in-cab camera analyses the positional relationship between traffic lanes and vehicles, and estimates the driver's level of concentration based on irregular or shaky steering. If the system determines that the driver's level of concentration has dropped, it activates a two-step alarm and displays a warning message on the multi-display to alert the driver and suggest a break.



Sliding/Spinning



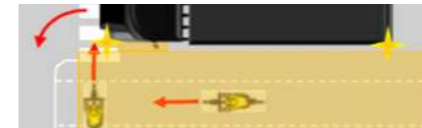
Rollover



BSIS and LCS radars location on the QUON



Indicator blinking



BSIS and LCS detecting VRU and vehicles on the Left Side



Pop-up on instrument cluster & buzzer sound

Blind Spot Information (BSIS) and Lane Change Support (LCS)*

BSIS and LCS increase driver visibility especially when navigating congested roads or densely populated city centers — resulting in better care for other road users.

Changing lanes or turning is made safer by detecting present VRU in the area. Detection will trigger a blinking indicator and the instrument cluster will display a warning, accompanied by an audible buzzer to alert the driver.

*BSIS and LCS will be available for both left and right side at a later date.

Driver Status Monitor*

Focus on driving knowing that your safety is being monitored. The Driver Status Monitor watches over your posture, and facial activity to detect if you're fatigued or drowsy. If you're losing attention during your drive, the system will alert you with a pop-up display and buzzer sound — prompting you to take a break.

*Available in AUS.

Traction Aid*

Maintain control in slippery road conditions with extra grip. Manually toggle this function on or off at your discretion and reduce unnecessary tire wear. Traction aid automatically turns off for you after 15 km/h.

*Available in AUS.

Basic safety: Reducing fatigue while driving

LED headlamps

The long-lasting LED lamps used for low beam provide a bright and clear light to improve night-time visibility for safe driving.

Safe Brake Blending

Brake blending provides superior braking efficiency and optimal balance between the main brakes and auxiliary brakes, simply by pressing the brake pedal.

Disc brakes

Disc brakes with high heat dissipation and superior fade resistance provide reliable braking performance even on long descents. As they are less susceptible to water penetration, they also provide stable braking performance even in adverse conditions. They respond quickly and smoothly to the brake pedal and reduce the impact of braking, to prevent damage to your valuable cargo.

Emergency Braking System

This system uses dual monitoring with a millimetre-wave radar and camera to warn the driver of a potential collision with the vehicle in front. If the chance of a collision increases, the Quon applies the brakes to reduce the chance or severity of a collision. the brakes automatically to reduce damage.

UD EEB (UD Extra Engine Braking)

The UD EEB function on the GH11 and GH8 engines with ESCOT-VI transmission maintains a high engine rpm to ensure maximum auxiliary braking performance.

Immobilizer

You can only start the engine with the dedicated key, helping to reduce the risk of vehicle theft. The immobilizer is equipped as standard on all models.



Long grip on driver's side and two-step floor height

Long grip and two-step entry/exit make it easier to get in and out, while the floor height has been lowered to improve direct visibility.

Comfortable and efficient driving performance

ESCOT-VI - the latest evolution in 12-speed automated manual transmission, disc brakes, and an interior designed for driver comfort, provide a sophisticated and comfortable driving experience that reduces driver stress and fatigue.

Unparalleled operability: ESCOT-VI

ESCOT-VI provides advanced gear change control and suppresses fluctuations in fuel efficiency. Enhancements to hardware and software control achieve fast and accurate gear changes. Quick and smooth gear changes reduce the driver's level of stress and fatigue while contributing to safe driving. Performance is also improved on uneven surfaces and muddy roads.

Simple and easy-to-use gear lever

The ESCOT-VI gear lever uses a straight shifting pattern, an evolution in simple and easy-to-use design.

- R: Reverse** For smooth driving in the reverse direction at slow speed.
- N: Neutral** Gear lever position for when the truck is parked.
- D: Drive** Programmed for the quick gear changes and fuel efficient driving of a professional driver. You can also use the convenient +/- button on the right side of the gear lever to change up and down.
- M: Manual** Manual mode.

Allison 6 speed automatic transmission also available on 8L CG models



The system provides a full set of switches to set, change, and cancel vehicle speed. There's also an ECO OFF switch to change between ECO mode and ECO OFF mode.

Traffic Eye Cruise Control with Stop and Driver Initiate Go

This system uses millimetre-wave radar to detect the vehicle in front and maintain a fixed distance from it. If the vehicle in front accelerates, the Quon will accelerate within the range of speed and distance the driver has set using the switches on the control panel. You can set a speed of 30km/h or higher. If the target vehicle in front decelerates or stops, the Traffic Eye Cruise Control with Stop and Driver Initiate Go will slow down or stop accordingly, and a "HOLD" sign will light up.

4-Spoke Steering Wheel

Using ergonomic research, we re-designed the shape of the steering wheel to give a more comfortable grip that reduces driver fatigue. We've placed the most important switches conveniently for easy access to functions and information. This ensures that the driver's line of sight and operation are along the same axis, for efficient, safe, and reliable operability.

Instrument panel with excellent visibility

We've arranged the driving information and LED indicators on the instrument panel in an easy-to-understand layout that provides excellent visibility. Information is displayed in zones arranged according to warning priority, with the most important information at the top. A large 5-inch color LCD multi-display is mounted in the centre of the instrument panel.



The dashboard in the image above belongs to a Quon with ESCOT-VI transmission

Dashboard designed for driver comfort

We've designed a functional black-and-silver dashboard that skilfully combines straight lines and curves. This design enhances driver operability and visibility and provides the optimal arrangement of multi-display monitor, switches, equipment, and instruments. Switches are set to light up when in use and at night, so the state of any switch can be easily understood with a quick glance.

Disc brakes for reliable and powerful braking

Disc brakes give a quick and smooth brake pedal response and reliable braking, even on long descents when hauling a full load. By combining a variety of advanced brake systems, such as brake blending and the Traffic Eye System, we have achieved comfortable braking that is easy on cargo, while also reducing driver fatigue.





Advanced Fuel Efficiency for a Greener Future

Quon's new driveline features a cleaner, improved 'GH11 Engine' with increased horsepower and torque, and the ESCOT-VI automated manual transmission with enhancements to fuel efficiency. The driveline uses advanced technology and upgraded features to achieve higher fuel efficiency, lower carbon emissions, and smooth, comfortable driving with little fatigue.

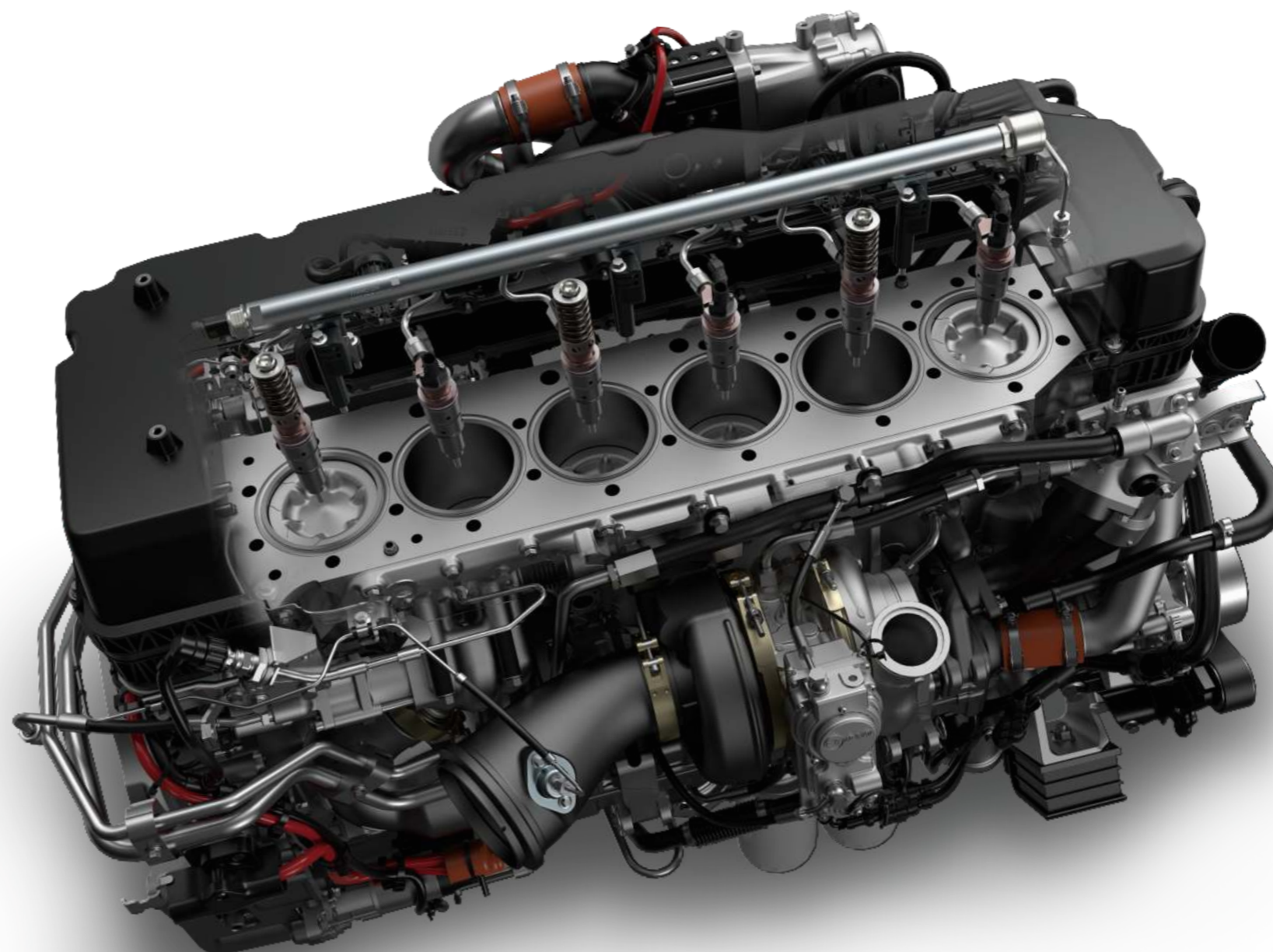
Fuel efficient, powerful, clean 'GH11 Engine'

The 'GH11 Engine' uses the unique properties of both a unit injector and a common rail system. The GH11 is able to generate torque at a low revolution speed, and can continue across a wide revolution range. It also features a new fuel injection system, and improvements to the shape of the combustion chamber.

10%* more fuel efficient than Japan's current fuel economy standards for commercial trucks, the GH11 readily complies with stringent pPNLT (post-Post New Long-Term) exhaust gas emissions regulations — equivalent Euro 6 emission requirements.

Upgraded with a new high-strength clutch and flywheel (460PS), along with additional noise insulation and better heat management, the new design improves fuel efficiency by 2.5%. It's an improvement that aligns with Japan's agenda of becoming carbon neutral by 2050.

*Applicable to Quon with GH11 engine and ESCOT.

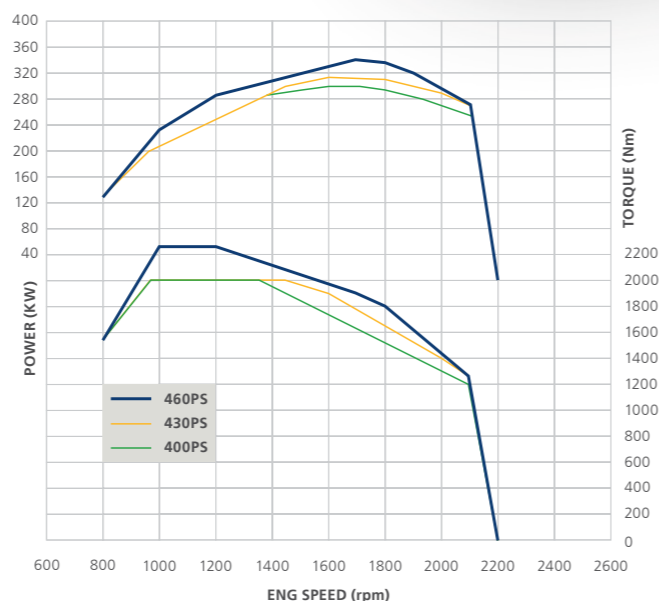


Safely reducing fuel consumption

UD Truck's most fuel efficient and reliable 11L engine lowers operating costs and runs at a 2.5% improvement to fuel efficiency.* Through superior engine gradability, faster acceleration and greater torque are achieved — further improving profitability by means of a shorter trip time.

*Depending on applications and road usage.

| | Improvements from current GH11 engine | Max Power | Max Torque |
|-------|--|----------------------|------------|
| 460ps | Comparison to GH11TD460PS 100 rpm less to achieve Max Torque + 50 Nm of Max Torque | 339 kW / 1700 rpm | 2250 Nm |
| 430ps | Comparison to GH11TC420PS + 7 kW (10 PS) of Max Power + 100 Nm of Max Torque | 316 kW / 1600 rpm | 2000 Nm |
| 400ps | Comparison to GH11TB390PS + 7 kW (10 PS) of Max Power + 250 Nm of Max Torque | 294 kW / 1600 rpm | 2000 Nm |



Longer uptime, lasting safety

VDS-5 5W-30 engine oil safely delivers the advantages of exceptional anti-wear, deposit, and soot control. This allows for increased engine wear protection, thus a lower maintenance cost, and an increase in engine oil intervals. VDS-5 marks a 35% improvement in interval length over VDS-4, with the improved formulation of a lower viscosity enabling a reach of up to 95,000km. The engine oil volume required for use is also reduced by up to 6%.



ESCOT-VI for enhanced fuel efficiency

Evolutions in the hardware and software controls of the ESCOT-VI 12-speed automated manual transmission provide improved gear shifting leading to increased fuel efficiency.



Advanced Functions to Enhance Fuel Efficiency and Improve Sustainability

When the driver starts the Quon, ECO mode, ESCOT Roll, Acceleration Limiter, Soft Cruise Control, and other features automatically turn on. Fuel efficient driving begins as soon as the engine is running and, more importantly, keeps the planet going.

ESCOT Roll is only available on ESCOT-VI transmission.





More powerful, yet safer for the planet

The push to protect the environment and our future has never been greater. In our commitment with Japan to meet the United Nations' Climate Change Convention Greenhouse Gas Milestone Global push for a low-carbon, climate-resilient future, we have upgraded the Quon truck's engine to improve fuel efficiency, lower costs, and reduce carbon emissions.

Redesigning the engine

We have redesigned and improved engine components in the 11L model such as the cylinder block, cylinder head, injection system, pistons, crankshaft, connecting rods, lubrication system, and auxiliary drive. This increases power and torque, allowing faster acceleration and higher gradeability.

Improving the rear axle

A new high efficiency differential carrier, 17XHE, for the 4x2T and 6x2R configurations has been introduced in the 11L model to reduce gear transmission loss and friction loss. Lower drivetrain loss allows for greater engine power and torque on the wheels.



Fuel efficient driving in ECO Mode

ESCOT Roll and other functions that enhance fuel efficiency are engaged as soon as the engine is turned on in Quon ESCOT-VI models.

ESCOT Roll

This function enhances fuel efficiency while coasting, by reducing fuel consumption due to re-acceleration. It comes on automatically if certain conditions* are satisfied while in ECO mode. If the truck goes too fast while Traffic Eye Cruise Control with Stop and Driver Initiate Go is ON, ESCOT Roll cancels automatically.

*When the gear lever is in the D range, the exhaust brake switch is OFF, and coasting in 7th gear or higher on a flat road.

Acceleration Limiter

The acceleration limiter is programmed to limit sudden acceleration above a certain level - even when flooring the accelerator pedal - to enhance fuel efficiency and maintain stable driving. If acceleration is required, the driver can hit the ECO OFF switch on the steering wheel to remove the limitation on strong acceleration on Quon ESCOT-VI models.

Soft Cruise Control

Cruise Control suppresses sudden acceleration, controls engine speed, and returns the truck to the set vehicle speed, to provide excellent fuel efficiency.

'Nenpi Coach' for fuel efficiency advice

The 'Nenpi Coach' system analyzes driving patterns for a specified time period, then displays optimal fuel efficiency advice on the multi-display monitor in an easy-to-read format. The driver can also check other detailed information and optimal driving techniques to improve fuel economy on Quon ESCOT-VI models.

UD Connect

UD Connect is a valuable asset that operators and business owners can rely on to provide valuable, real-time data that can influence business decisions to positively impact uptime and profitability. This includes vehicle operational data, location information, and fuel efficiency reporting.

Idle Shut Down (ISD)*

The Idle Shut Down feature enables automatic shut down of the engine after a few minutes of idling during parking, contributing to maximum fuel efficiency.

*Available in AUS, NZL & SAF.

Better productivity, better efficiency

The key to efficient transportation is increased payload and greater mobility. The Quon combines smart and innovative features that safely boost productivity while maintaining a lasting build quality.

Reduced vehicle weight

Disc brakes and high-tensile steel rails for the main frame reduce weight to improve overall productivity.

Improved load handling, uneven load adjustment function

The uneven load adjustment function automatically adjusts any lateral differences in height on trucks with new air suspension. This improves handling when loading from the side of the truck.

Light and strong frame

High-tensile steel rails and reduced height of the frame cross-section maintain strength, while reducing weight, to achieve further improvements in loading performance.

Air suspension with increased height adjustment range

The air suspension features increased adjustment range. This enables optimal height adjustment for loading docks and connecting trailers, with an adjustment width of +140mm upward from the neutral position.



Reliability and durability you can count on

For over 85 years, UD Trucks has built reliable, high-quality trucks that deliver ultimate dependability. Every component undergoes rigorous testing, so you know that no matter what you throw at it, it will perform. Lasting safety and operability are part of our design philosophy. Featuring a high tensile steel chassis, a fuel-efficient driveline, and proven, robust components, Quon is able to perform like no other on the highway, in the city, and on the job site.

The improved servicing schedule reduces the number of servicing sessions needed per year by up to 50%*. With new features that save time spent for workshop repairs and reduce insurance claims, you can have meaningful uptime for your Quon which would go towards growing your business.

*Based on annual mileage of 80,000km.

New engine oil features

With the new engine, only two oil filters need to be replaced during servicing — one less than the current three filters. Engine oil volume required is also reduced to 31L, up to 6% less oil than previously required.

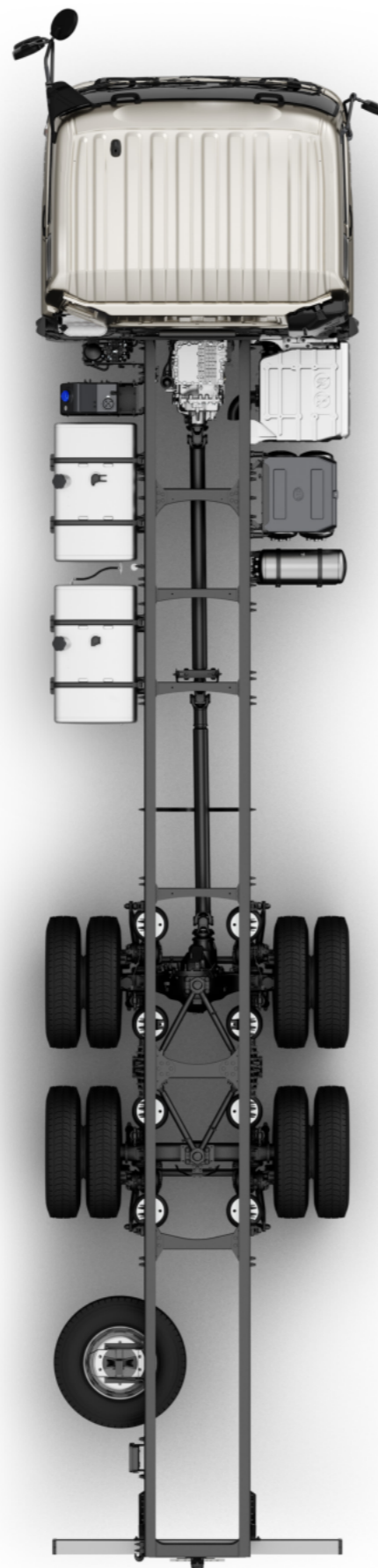
To increase service intervals, engine oil intervals have been increased to up to 95,000km*, a 35%* improvement from the previous. Exceptional anti-wear, deposit, and soot control protects the engine, reducing the need for servicing and thus increasing uptime.

*Applicable for the use of VDS-5W-30 engine oil.

Rigorous testing

A variety of tests, that simulate the harshest conditions have been conducted in the New Quon. We can confirm that the engine will start, even in the harshest conditions. We used this process to test disc brakes and UDSC (UD Stability Control) to verify driving stability on uneven roads. These functions also improve performance in muddy areas. Such rigorous tests improve the reliability and durability of the New Quon.

Starting assistance function for snowy roads and muddy areas is standard for the ESCOT-VI automated manual transmission.



Advanced maintenance for a high level of uptime

Uptime is critical for the distribution business, and the key to uptime is ensuring the required maintenance is done at the optimum intervals. An excellent level of maintenance for your Quon and the long intervals between the replacements of genuine parts greatly contribute to reducing the life cycle cost.

Hub bearing unit for improved maintenance

Sealed type hub bearing unit, for improved maintenance during inspections.

Cab for easy daily maintenance

All of the equipment that is required when performing daily inspections is easily accessible without tilting the cab. The cab tilts to 65 degrees for a large work space.

The grille should be opened before tilting the cab.

Periodic replacement parts and long replacement intervals

We use disc brakes that do not require expanders, and have reduced the number of parts that need to be replaced regularly. The differential gear oil that we use is a high-quality synthetic oil that is highly heat-resistant and does not degrade easily, enabling longer replacement intervals.

Long-lasting LED headlamps

We use long-lasting and power-saving LED low beam headlamps. There is little degradation from turning the lamps on and off, and they provide clear and bright light for a long time, contributing to a low running cost.

New stainless steel muffler cover

Our muffler covers have been replaced with stainless steel instead of painted steel or aluminium. This provides better rust prevention, easier access to the back of the cab and better surface finishing. 2-step inbuilt on muffler, providing easy access to the back of the cab.

Enhanced fuel reading accuracy

The internals of the fuel tank have been redesigned to improve ground clearance and fuel delivery. A smaller sensing distance results in greater accuracy of fuel readings, thus maximizing the usage of fuel from the new and updated tanks.



New fuel tank design is applicable to 8L models.

Maximizing uptime is the decisive factor in business: 'UD Extra Mile Support'

After delivery, maintenance using the latest technology and genuine parts is important for maximizing uptime, driving performance, fuel efficiency, and safety.

With 'UD Genuine Service', our knowledgeable and experienced technicians perform the optimal maintenance with UD Trucks' specialised tools.

Genuine parts provide peace of mind. Our high-quality 'UD Genuine Parts' have passed strict tests and contribute to maintaining quality for a long period and maximizing uptime.

We have also improved the engine such that only two oil filters need to be replaced during servicing — one less than the current three filters. Engine oil volume required is also reduced to 31L, up to 6% less oil than previously required, thus maximizing uptime.



'UD Extra Mile Support' Solutions

Fuel efficiency, improved uptime, and full support from the largest dealer network in Australia and New Zealand.



UD Genuine Service

We deliver consistent performance for our customers and their businesses. We are continuously improving, are customer-driven, and understand challenges, problems, and opportunities. This allows us to go the extra mile to support our customers.



UD Road Assistance

We know how it feels to experience an unexpected standstill. Operating 24/7, UD road support will get you back up and running in no time. Offering reliable UD Genuine Service and quality UD Genuine Parts, our dedicated call center specialists will stay with you every step of the way until your issue is resolved.



Service Agreements 'UD-Trust Service Agreements'

Three levels of UD Trust service care are available: UD Trust Standard, UD Trust Extra, and UD Trust Ultimate. With these three levels, full transparency, no surprises with unplanned repair expenses and less administration are guaranteed.



UD Mobile Workshop

UD mobile workshop brings basic workshop services right to your doorstep. Our trusted professional technicians can provide preventive maintenance, basic repairs, oil changes or electronic diagnostics using UD Trucks systems and tools. Saving you time and money for the long haul.



Optimized Service Planning

With longer service intervals, you won't have to visit our workshops and instead get the most out of your fleet. Our optimized service planning uses telematics, which helps us plan any maintenance remotely. It also lets us customize service schedules for your specific application.



UD Connect

UD Connect Services is a smart, high-tech wireless communications system supported by our network of UD dealers and specialists. It is designed to improve your competitive position through business improvement and efficiency.



UD Genuine Parts

Because every part of your trucks matter. Designed and tested to provide the highest quality and durability, and with a two-year warranty, access to UD Genuine Parts increases uptime and lowers costs per kilometer.

Remote diagnostics monitor truck health and performance, helping to reduce fuel and operational costs, improving fleet management, increasing vehicle uptime and offering you peace of mind.

Geofencing allows you to draw virtual boundaries, which alert you with customized messages when your vehicles cross these boundaries. Geofences can also monitor speed limits within each zone and alert you when these speed limit thresholds are crossed.



Vehicle Handover Program

We want to encourage new drivers to make a positive contribution to your operations. Our Driver Training program is designed to help build driver capability. Courses cover not only vehicle handover and operation, but also the best methods for fuel efficient and safe driving. Dedicated modules are available for long haul drivers.

The UD Connect mobile app is a compact version of our UD Telematicsweb platform, which is available for both iOS and Android devices.

- Know where every truck is, 24/7
- Set the fastest, most direct routes via the Geofencing feature
- Draw boundaries and get alerts if vehicles deviate from route
- Receive alerts when speed limit thresholds are crossed Easy-to-understand information



UD Warranty

Our manufacturer's warranty provides support for safe driving. For more information about the details of the warranty, please refer to the Warranty Sheet.



UD Financial Services

UD Trucks provides integrated financial services. UD Financial Services understand our customers' businesses, and provide detailed solutions based on their requirements. Services such as leases, hire purchase, and maintenance services, all provided within a collective agreement.



QUON
Innovation that puts people first



QUON

UD TRUCKS

6025460

QUON



For details on each vehicle, please contact your local UD Trucks dealer.
The specifications and other information in this brochure are subject to change without prior notice.
(This brochure is current as of July 2022).

UD Trucks manufactures standard vehicle which does not include technical modification on the truck chassis to comply with the rules imposed by international conventions, relevant national legislation, and transport standards for specific purposes such as hazardous substance transport. Any such modification needs to be done by bodybuilder or customer, and in no event shall UD Trucks be liable for any liability, loss, injury or risk which is incurred or suffered as a result of such use of the vehicle.

UD Trucks Corporation
1-1, Ageo-shi, Saitama 362-8523, Japan
udtrucks.com