

# TECHNICAL BULLETIN FC-01

DATE: NOVEMBER 7, 2005 (Revised 1/07)  
 MODEL YEAR: 2005 AND AFTER  
 ENGINE MODEL: J05D-TA and J08E-TE  
 CHASSIS MODEL: UD1800CS, UD1800HD ~ UD3300  
 BULLETIN NUMBER: FC-01  
 FILE IN THE FUEL SECTION OF THE TECHNICAL BULLETIN BINDER

## ENGINE THROTTLE CONTROL SWITCH MOUNTING

### PURPOSE

The engine throttle control switch (fast idle), may rotate in the dash mounting hole beyond the notched index.

### DESCRIPTION

Field reports have found that the engine throttle control switch can rotate beyond the notched index if excessive force is used, resulting in twisted wiring and connections.

### REPAIR PROCEDURE

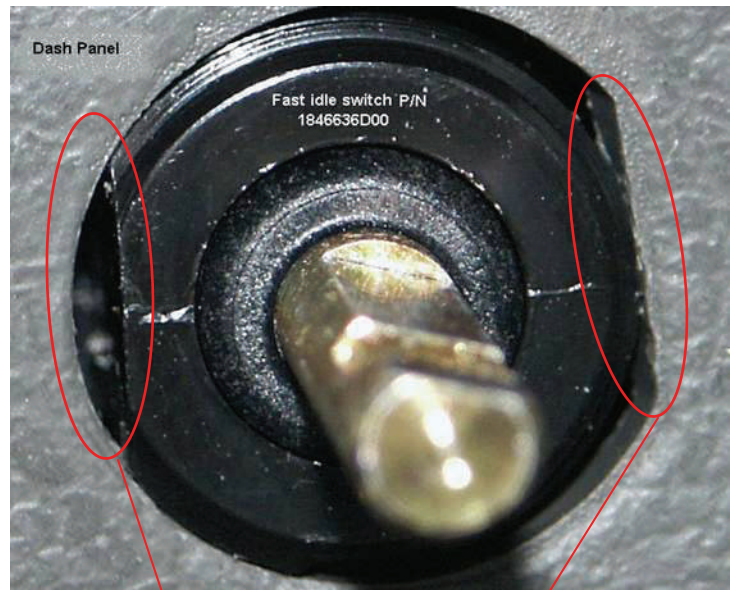
To prevent the switch from rotating, install a serrated (star) washer between the switch's back up washer and the instrument panel.

### SERVICE ADVISORY

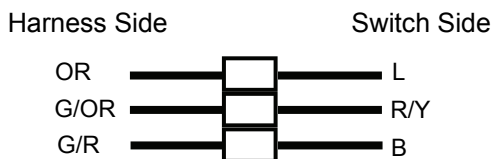
If the engine throttle control switch has rotated in the mounting hole, damage to the switch wiring harness can occur. This can cause multiple engine diagnostic fault codes simultaneously displayed such as:

DTC	Description:
P0405	EGR lift sensor 1
P0407	EGR lift sensor 2
P0340	Engine speed sub sensor

Proceed to inspect for a twisted Engine Throttle Control Switch wiring harness and repair as required in addition to performing the normal diagnostic procedures for the indicated trouble codes.



### Wiring Schematic



THE INFORMATION CONTAINED IN THIS BULLETIN SHOULD NOT BE INTERPRETED AS THE BASIS FOR WARRANTY CLAIMS

FOR THE INDICATED PERSONNEL BELOW, PLEASE READ, INITIAL, AND ROUTE TO THE FOLLOWING:

X	SERVICE MANAGER	X	WARRANTY MANAGER	X	SERVICE TECHNICIANS INITIAL BELOW:		
X	PARTS MANAGER	X	SHOP FOREMAN				